

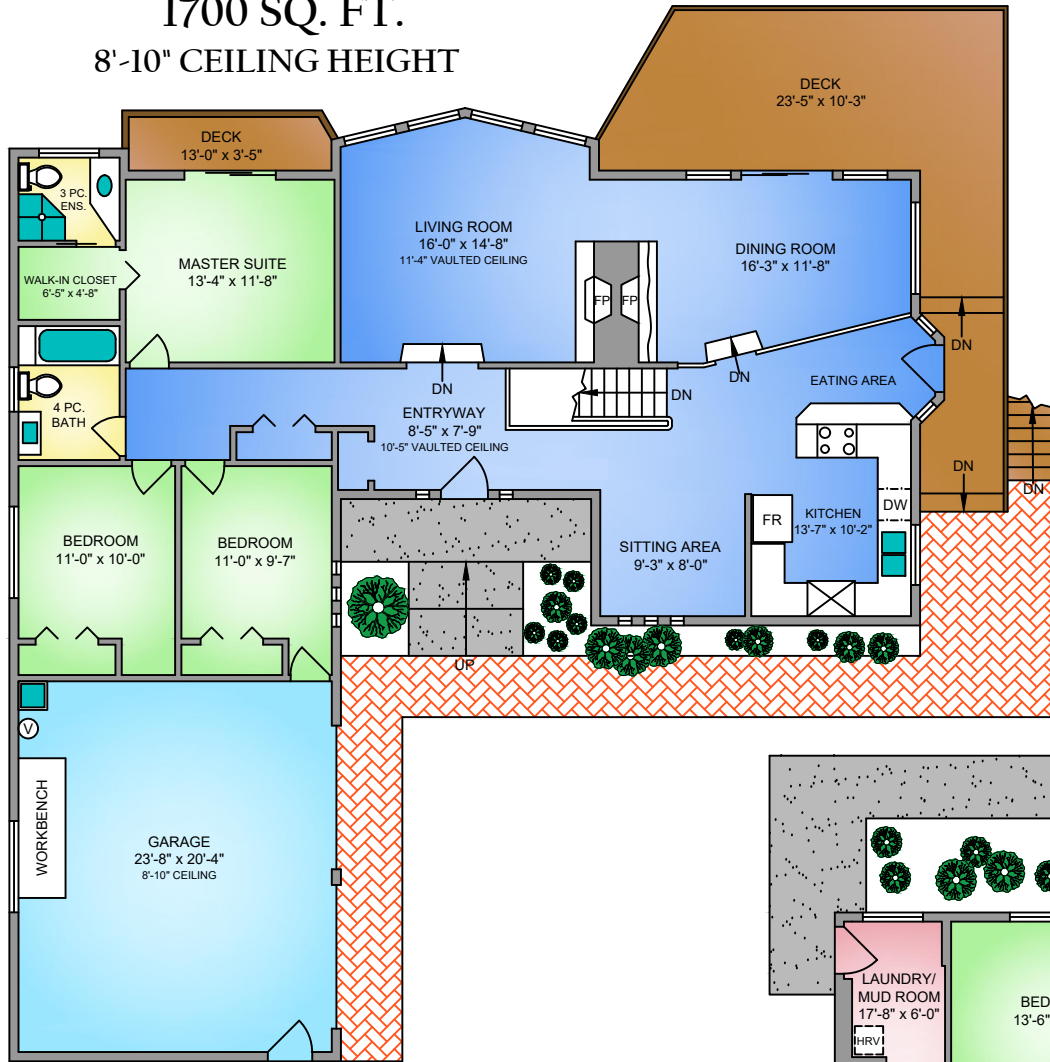
MAIN FLOOR

1700 SQ. FT.

8'-10" CEILING HEIGHT



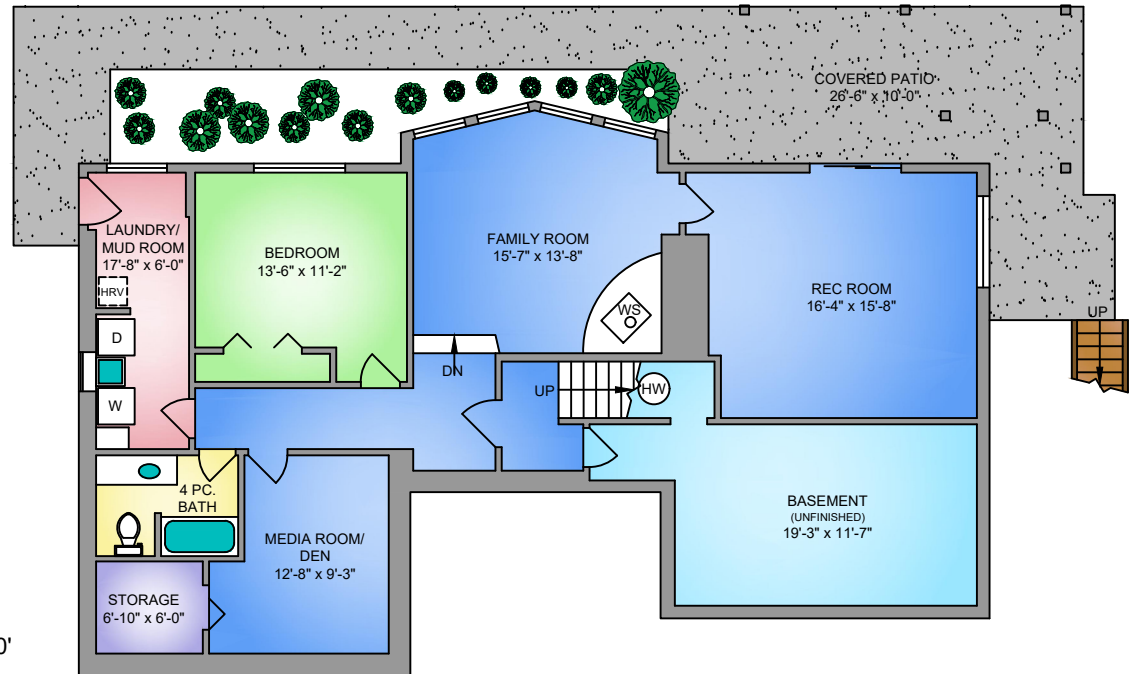
HOLMES
(REALTY)



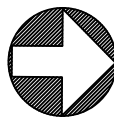
LOWER FLOOR

1403 SQ. FT.

8' CEILING HEIGHT



NORTH



0' 5' 10'
SCALE

11118 TRILLIUM PLACE JANUARY 7, 2020 PREPARED FOR THE EXCLUSIVE USE OF MICHELE HOLMES PLANS MAY NOT BE 100% ACCURATE, IF CRITICAL BUYER TO VERIFY.				
AREA (SQ. FT.)				
FLOOR	FINISHED	UNFINISHED	GARAGE	DECK / PATIO
MAIN	1700	-	517	332
LOWER	1403	286	-	265
TOTAL	3103	286	517	597