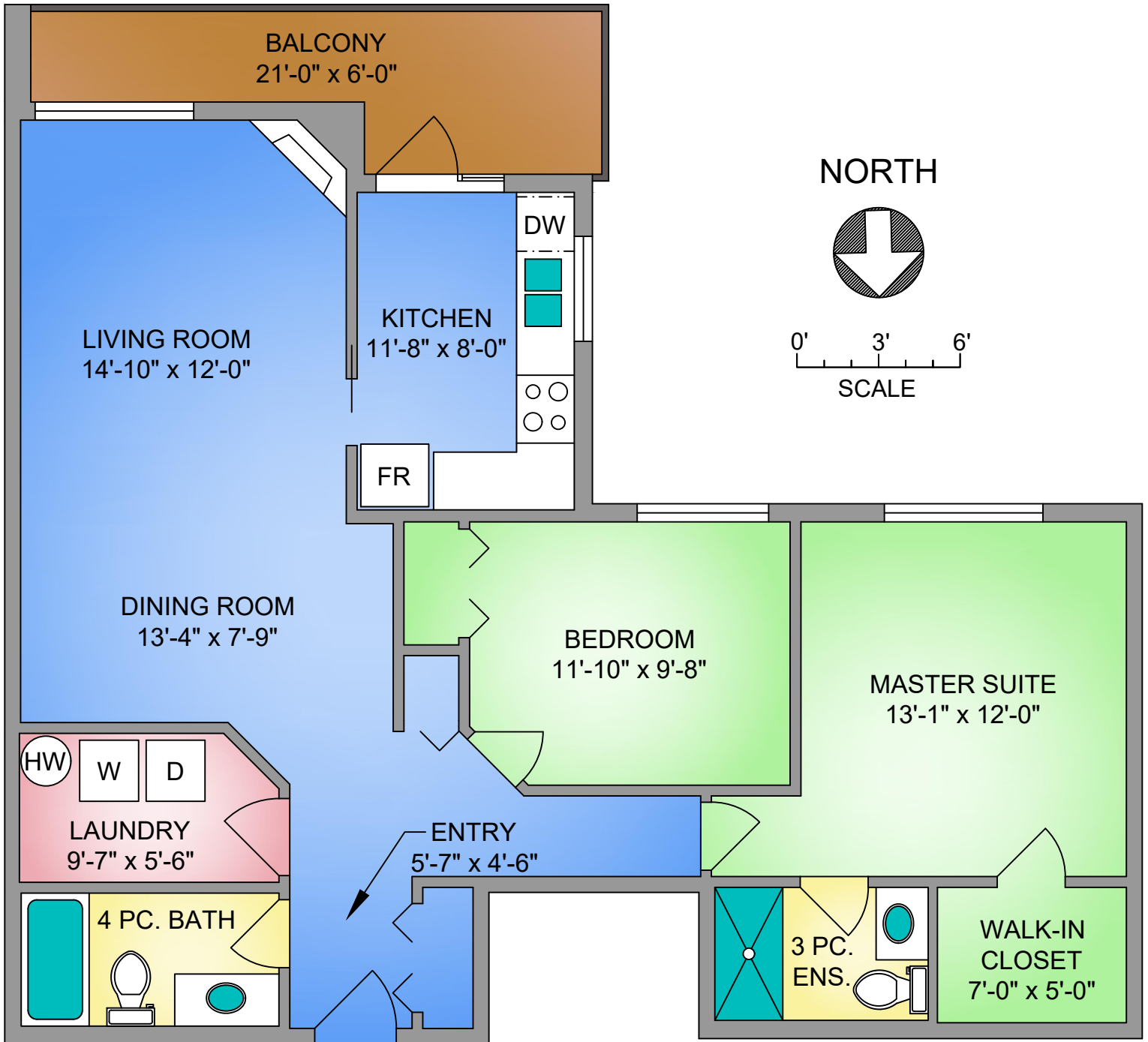


UNIT 203 - 2475 BEVAN AVENUE
1044 SQ. FT.
8' CEILING HEIGHT



250-884-9753
 matt@propermeasure.com
 www.propermeasure.com



HOLMES
 (REALTY)

UNIT 203 - 2475 BEVAN AVENUE		
NOVEMBER 18, 2019		
PREPARED FOR THE EXCLUSIVE USE OF MICHELE HOLMES		
PLANS MAY NOT BE 100% ACCURATE, IF CRITICAL BUYER TO VERIFY.		
FLOOR	AREA (SQ. FT.)	
	FINISHED	BALCONY
SECOND	1044	93