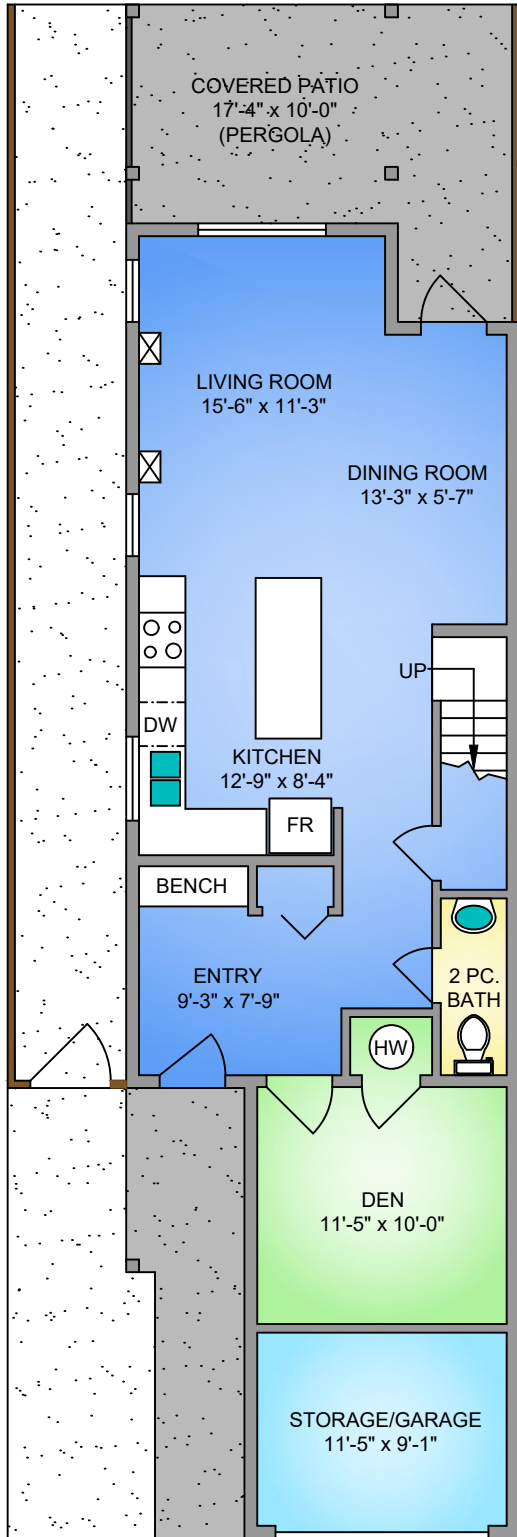


# MAIN FLOOR

812 SQ. FT.

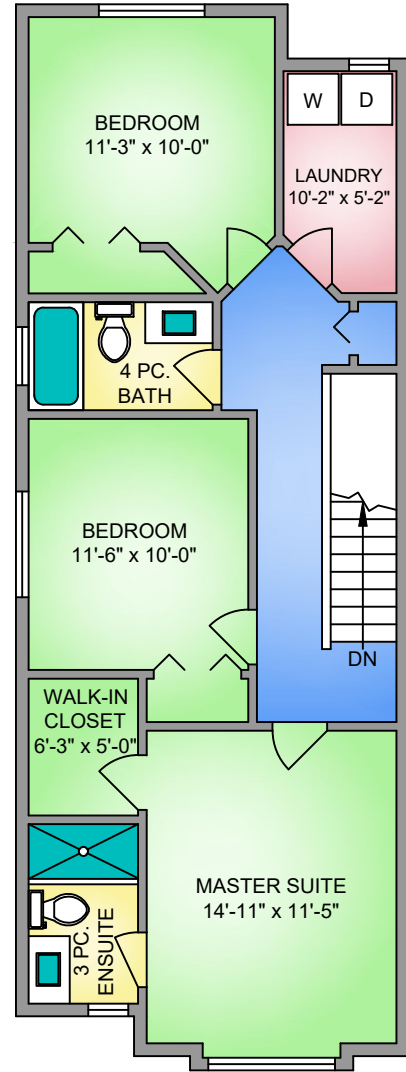
8' CEILING HEIGHT



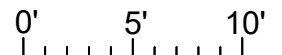
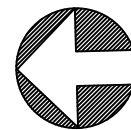
# UPPER FLOOR

832 SQ. FT.

8' CEILING HEIGHT



NORTH



SCALE

9537 SHARPLES ROAD OCTOBER 2, 2019 PREPARED FOR THE EXCLUSIVE USE OF MICHELE HOLMES PLANS MAY NOT BE 100% ACCURATE, IF CRITICAL BUYER TO VERIFY.			
FLOOR	AREA (SQ. FT.)		
	FINISHED	GARAGE	PATIO
MAIN	812	115	197
UPPER	832	-	-
TOTAL	1644	115	197

