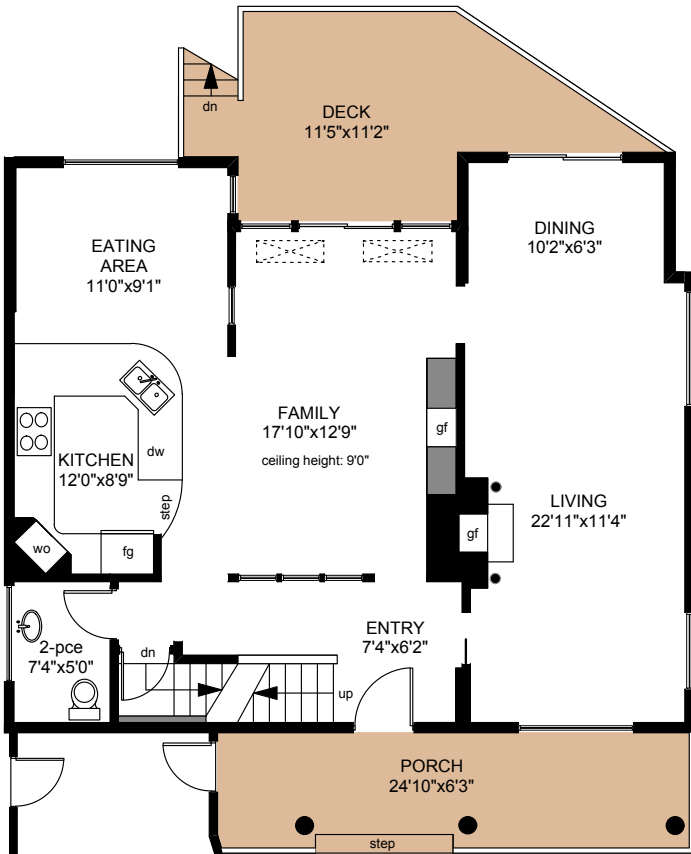
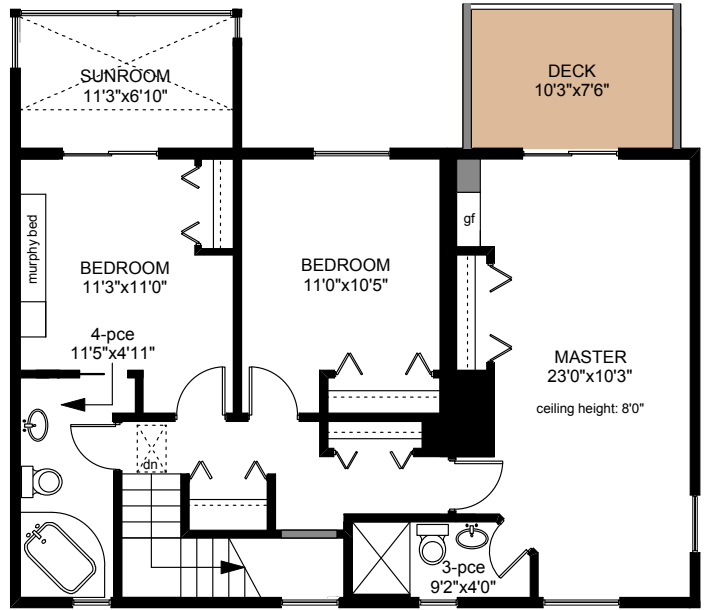


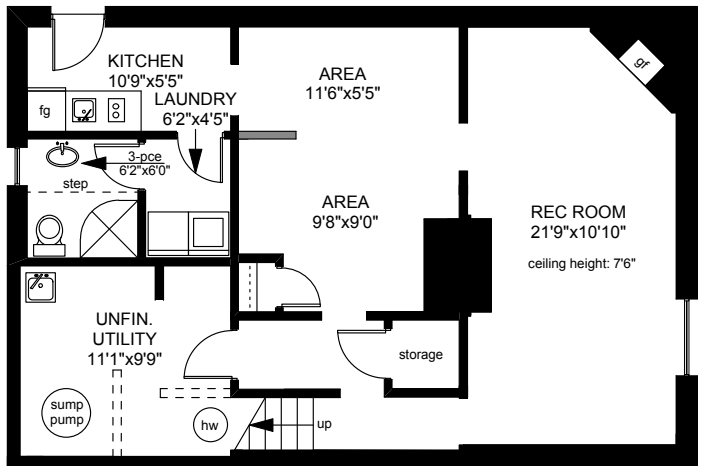
10453 ALLBAY ROAD



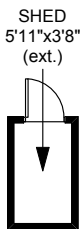
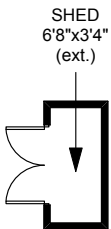
MAIN FLOOR
1036 SQ.FT



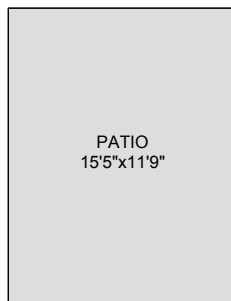
UPPER FLOOR
946 SQ.FT



LOWER FLOOR
862 SQ.FT

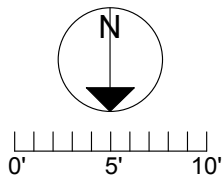


SHEDS
41 SQ.FT



PATIO
181 SQ.FT

	FINISHED SQ. FT.	UNFINISHED SQ. FT.	TOTAL SQ. FT.
MAIN	1036	0	1036
UPPER	946	0	946
LOWER	736	126	862
TOTAL	2718	126	2844
GARAGE	0	249	249
DECKS	0	269	269
PORCH	0	155	155
PATIO	0	181	181
SHEDS	0	41	41



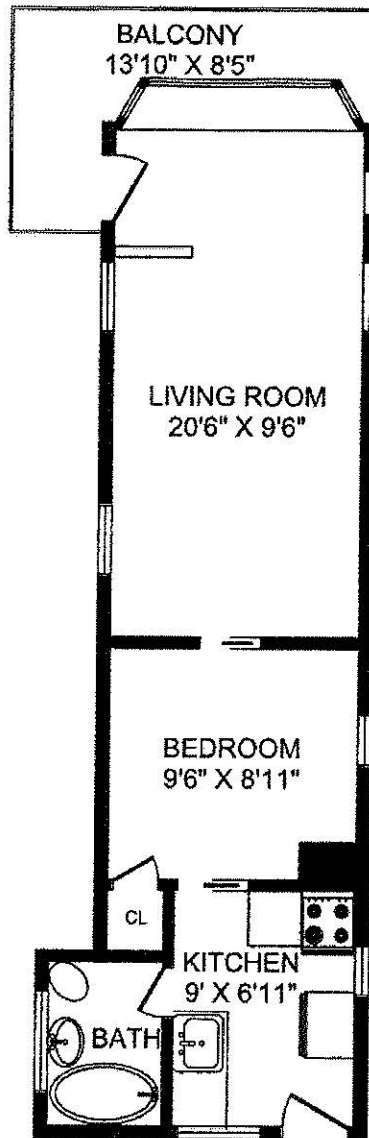
PREPARED FOR THE EXCLUSIVE USE OF
MICHELE HOLMES OF HOLMES REALTY

MEASURED ON: 07/19/13
DRAWING FILE: 11299

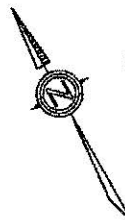
Tafe Measure VICTORIA, B.C.
Ph. 883.8894
www.tafemeasure.com

10453 ALLBAY ROAD

BOATHOUSE FLOOR



	FINISHED SQ FT	UNFINISHED SQ FT	TOTAL SQ FT
MAIN FLOOR	967	0	967
UPPER FLOOR	953	0	953
LOWER FLOOR	728	124	852
BOATHOUSE	421	0	421
TOTAL	3069	124	3193
GARAGE		244	244
DECK		227	227
BALCONY		160	160



All information furnished regarding this property is from sources deemed reliable but no warranty or representation is made to the accuracy thereof.